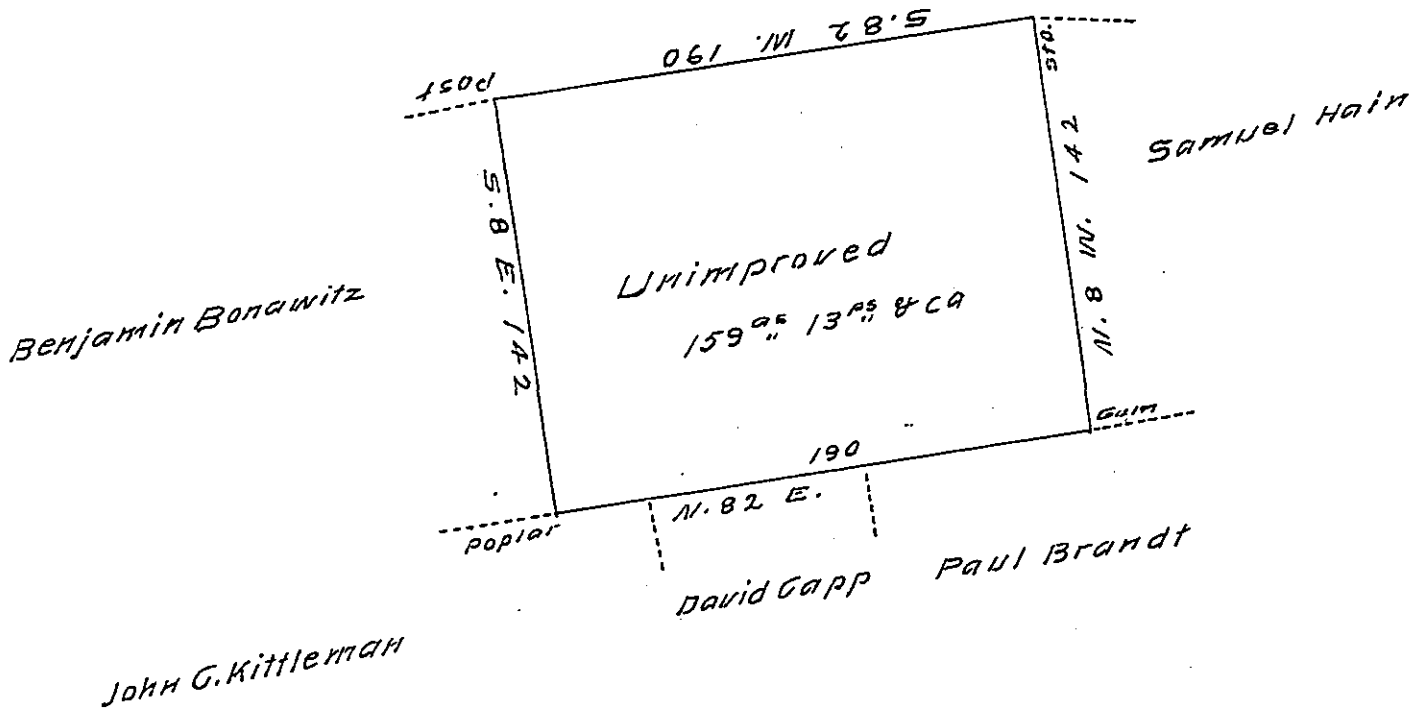


V a c a n t



Situate in Lower Mahantongo township Schuylkill County containing one hundred and fifty nine acres and thirteen perches and the allowance of six per cent. Surveyed on the 11th day of June 1829 in pursuance of a warrant dated the 14th day of March 1829 granted John C. Kittlerman.

F. Lauderbruch Dep. Sur.

To Gabriel Hiester Esquire

Schuylkill Co.

Surveyor General of Penn^a

IN TESTIMONY that the above is a copy of the original remaining on file in the Department of Internal Affairs of Pennsylvania, made conformably to an Act of Assembly approved the 16th day of February, 1833, I have hereunto set my Hand and caused the Seal of said Department to be affixed at Harrisburg, this Eighteenth day of January 1908

Henry Howell
Secretary of Internal Affairs.

SCHUYLKILL
JNO. C. KITTLEMAN
75^{ac} 90^{ps}